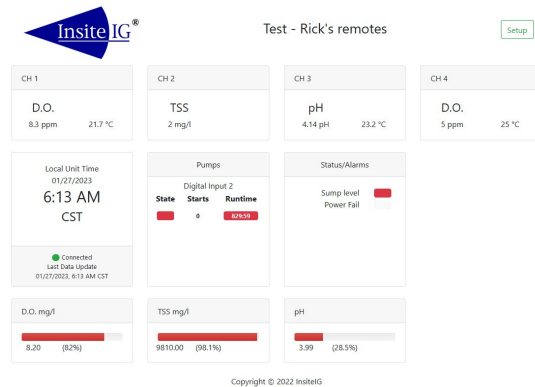


Insite Instrumentation Group, Inc. Wastewater Monitoring and Control Instrumentation

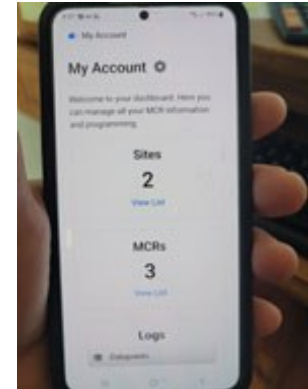
Real time remote monitoring solutions for wastewater treatment professionals

Ideal for facilities that are not staffed 24/7 and for lift stations
Monitor level, flow, dissolved oxygen, suspended solids, pH, ORP, and more

The new InsiteIG MCR remote monitoring system allows the user to monitor up to 20 process parameters remotely via a computer or mobile device. The MCR comes with cloud connectivity for over two years with no monthly fees. There is server redundancy with better than 99.9% server uptime and full encryption using standard SSL protocols. Initial configuration by mobile device through an onboard, isolated WIFI connection. The LPWA (low power, wide area) module will connect to the cloud over any available 4G/LTE network.



The user interface is easy to use and setup is simple. Trend graphing for up to 30 days worth of data points is available. High and low setpoints can be programmed so that operators are notified via text or email in the event of a process disruption. In the event that the MCR loses power it can send a notification alerting the operator that the unit is offline.



When used in conjunction with the InsiteIG multichannel analyzer operators can check on dissolved oxygen, suspended solids, pH, and ORP (REDOX) levels. Up to eight sensors can be monitored in any combination. It is also possible to monitor the process temperature when utilizing a dissolved oxygen or pH sensor. The MCR connects to the InsiteIG multichannel analyzer via a digital modbus signal so only one three conductor signal wire is required to connect the two units. The MCR will automatically configure the cloud with the sensors connected to the analyzer

There are four isolated 4-20 analog inputs that can accept third party devices such as level, pressure, and flow meters. The MCR can power the 4-20 loop or the MCR can be configured so that the third party device is powering the loop.

There are seven dry contact inputs that can be used for alarms, status, run times, and other on/off type events.

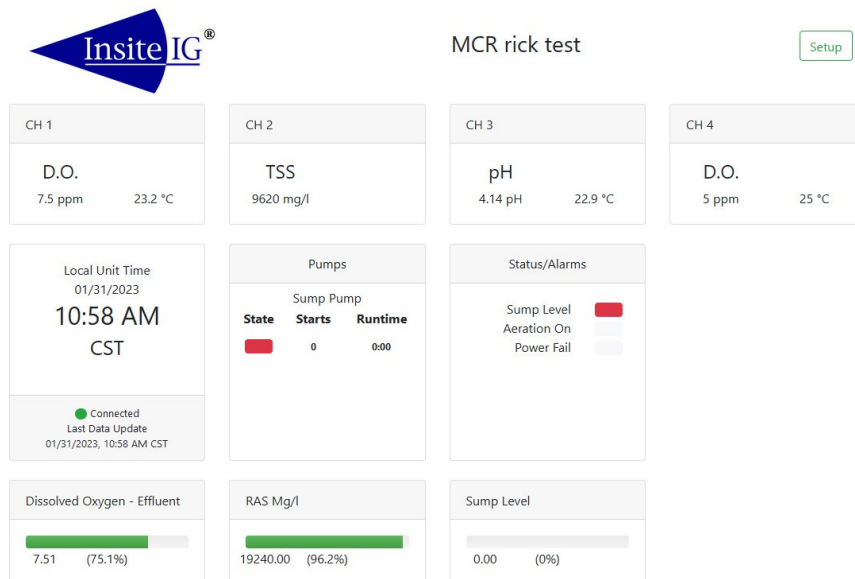


Insite Instrumentation Group
80 Whisperwood Blvd.
Slidell, LA 70458
Phone - 985-639-0006
Fax - 985-639-0014
e-mail - info@insiteig.com
Website- www.insiteig.com





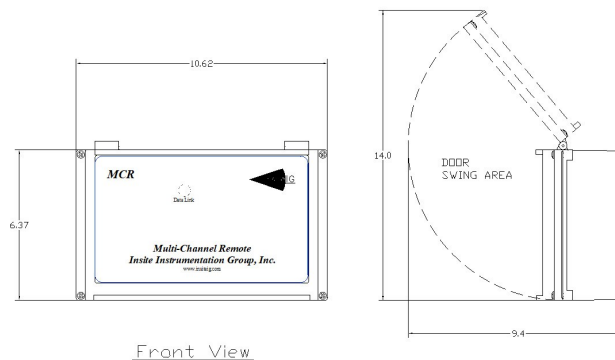
- Intuitive and simple user interface
- 3 years of cloud connectivity included
- Data logging and graphing
- Monitor up to eight InsiteIG sensors measuring dissolved oxygen, temperature, suspended solids, pH, and ORP (REDOX)
- Monitor up to four 4 to 20 analog signals from third party devices measuring parameters such as flow, level, and pressure
- Monitor up to eight dry contact inputs for alarms, run times, and status
- Programmable high and low setpoints with email and text notifications
- Automatic power failure notification
- 99% server uptime with full redundancy and full encryption using standard SSL protocols



Copyright © 2022 InsiteIG

Technical specifications

Power input 100 - 277 VAC 50 to 60 Hertz
 20 watts maximum
 Fused at .25 amps (250 milliamp)
 Ambient temperature - -40 to +70 degrees C
 Internal heater standard
 NEMA 4X—IP65
 Weight— 3.5 pounds
 Dimensions— 10.5 x 7 x 4



Insite Instrumentation Group
 e-mail - info@insiteig.com
 Website- www.insiteig.com
 OR CONTACT YOUR LOCAL TECHNICAL REPRESENTATIVE
 AT: